

locomotice system

Plastinated specimens I: Silicone specimens

Regional specimens and organs

The locomotor system

| Art-No. | Name | Description |
|---------|--------------------------------------|--|
| SL001 | The bones of the whole-body | Two hundred pieces of plastinated bones (without six auditory ossicles). |
| SL002 | The whole skull | Without the hyoid bone. |
| SL003 | Separated skull | Separated twenty-three bones, including the temporal bone, sphenoid bone, ethmoid bone etc, which are set up in situ with stainless steel frame. |
| SL004 | Horizontal section of the skull | Displaying: foramen, groove, orifice, lamina, protuberance, impression etc. |
| SL005 | Median-sagittal section of the skull | Displaying: groove, orifice, lamina, sinus etc; may remove the zygomatic arch to show the pterygopalatine fossa. |
| SL006 | Coronary section of the skull | Display: groove, orifice, lamina, sinus etc. |
| SL007 | The frontal bone | Showing the arch, foramen, process, groove, crest, and impression etc. |
| SL008 | The parietal bone | Showing the angle, line, foramen, groove, tubercle, and diploic veins etc. |
| SL009 | The sphenoid bone | Showing the sinus, foramen, canal, groove, and fissure etc clearly. |
| SL010 | The temporal bone | Showing the groove, border, canal, orifice, foramen, and fossa etc clearly. |
| SL011 | The maxilla | Showing the groove, crest, process, orifice, foramen, and fossa etc clearly. |
| SL012 | The zygomatic bone and nasal bone | Showing the structures outside. |
| SL013 | The ethmoid bone | Keeping the important structures intact, for example the lamina, foramen, groove, and wing. |
| SL014 | The palatine bone | Keeping the important structures intact, for example the groove, process, notch, and crest. |
| SL015 | The auditory ossicles | 3 in number, putting in situ. |
| SL016 | Tympanic cavity | Showing the facial nerve, cells, tympanic cavity (with temporal bone opened) , vestibular fossa of carotid etc. |
| SL017 | Semicircular canal | Showing the intact semicircular canals and spiral canal of cochlea. |
| SL018 | The mandible | |
| SL019 | Structure of bone | the opened long bone, showing the structures of the bone. |
| SL020 | The clavicle | |
| SL021 | The scapula | |
| SL022 | The humerus | |

| | | |
|-------|------------------------------------|--|
| SL023 | The radius and ulna | |
| SL024 | The bones of the hand | 27 in number. |
| SL025 | The hip bone | |
| SL026 | The femur | |
| SL027 | The tibia and fibula | |
| SL028 | The patella | |
| SL029 | Bones of the foot | 26 in number. |
| SL030 | The atlas and axis | |
| SL031 | The cervical vertebrae | One vertebrae with adjacent intervertebral disc. |
| SL032 | The thoracic vertebrae | One vertebrae with adjacent intervertebral disc. |
| SL033 | The lumbar vertebrae | One vertebrae with adjacent intervertebral disc. |
| SL034 | The sacrum | |
| SL035 | The sternum | With xiphoid process. |
| SL036 | The costal bones | |
| SL037 | The skull of infant | Showing the cranial fontanelles. |
| SL038 | The temporomandibular joint | Showing the articular disc. |
| SL039 | The intervertebral joints | Showing the intervertebral disc (fibrous ring and pulpiform nucleus), ligaments. |
| SL040 | The atlantoaxial joint | Showing the cruciform ligament of atlas. |
| SL041 | One half of female pelvis | Cut sagittally, showing the ligaments of pelvic cavity. |
| SL042 | One half of male pelvis | Cut sagittally, showing the ligaments of pelvic cavity. |
| SL043 | Full female pelvis | Showing the ligaments of pelvic cavity. |
| SL044 | Full male pelvis | Showing the ligaments of pelvic cavity. |
| SL045 | The spinal column | Showing the correlative joints, ligaments, physiological curves, etc. |
| SL046 | The shoulder joint | Reserve the correlative ligaments, open articular capsule to show the cavity. |
| SL047 | The elbow joint | With an intact articular capsule. |
| SL048 | The elbow joint | Showing the three ligaments and articular surface. |
| SL049 | The joints of hand | Ligaments dissected, the wrist joint is coronally cut to show the articular disc and cavity. |
| SL050 | The hip joint | With sacrotuberal and sacrospinal ligaments. |
| SL051 | The knee joint | With the joint capsule removed, showing ligaments and articular cavity. |
| SL052 | Sagittal section of the knee joint | |
| SL053 | Meniscus | With the patella and the patellar ligament reserved, showing the meniscus, cruciate ligament, transverse ligament etc. |
| SL054 | The joints of the foot | Ligaments dissected, coronally cut to show the intertarsal joints and the anatomy of. |
| SL055 | Half head specimen | Superficial dissection |
| SL056 | Half head specimen | deep dissection |
| SL057 | Full head specimen | Keeping the pharynx closed, showing the posterior aspect of the pharyngeal muscles. |

| | | |
|-------|-----------------------------|---|
| SL058 | Full head specimen | With stylohyoid muscles, pharynx opened, view upon larynx from rearside. |
| SL059 | The upper limb | Superficial muscle dissection, with arteries and nerves. |
| SL060 | The upper limb | Deep muscle dissection, with arteries and nerves. |
| SL061 | The upper limb | Combined superficial and deep muscle dissection. |
| SL062 | Muscles of hand | Superficial muscle dissection. |
| SL063 | Muscles of hand | Deep muscle dissection. |
| SL064 | The diaphragm | With part of spinal column, stomach, liver, spleen and pancreas. |
| SL065 | The diaphragm | Without the viscera. |
| SL066 | Muscles of trunk | Superficial muscle dissection. |
| SL067 | Muscles of trunk | Deep muscle dissection. |
| SL068 | The male perineal muscles | Superficial muscle dissection, with arteries and nerves. |
| SL069 | The female perineal muscles | Superficial muscle dissection, with arteries and nerves. |
| SL070 | The lower limb | With half pelvis attached, superficial muscle dissection. |
| SL071 | The lower limb | With half pelvis attached, deep muscle dissection. |
| SL072 | The lower limb | With half of pelvis attached, combined superficial and deep muscle dissection. |
| SL073 | Muscles of hip and thigh | Bilateral, deep muscle dissection on one side, superficial muscle dissection on the other side. |
| SL074 | Muscles of leg | Superficial muscle dissection |
| SL075 | Muscles of leg | Deep muscle dissection. |
| SL076 | Muscles of foot | Superficial dissection of sole. |
| SL077 | Muscles of foot | Deep dissection of sole. |



Art – No / S L 004
Horizontal section of the skul



Art – No / S L005
Median-sagittal section of the
skull



Art – No / S L011
The maxilla Showing the
groove, crest, process, orifice,
foramen, and fossa etc clearly



Art – No / S L015
The auditory ossicles 3 in
number, putting in situ



Art – No / S L 017
Semicircular canal Showing the
intact semicircular canals and
spiral canal of cochlea



Art – No / S L019
Structure of bone the opened
long bone, showing the
structures of the bone



Art – No / S L021
The scapula



Art – No / S L024
The bones of the hand 27 in
number



Art – No / S L 027
The tibia and fibula



Art – No / S L029
Bones of the foot 26 in number



Art – No / S L 030
The atlas and axis



Art – No / S L 031
The cervical vertebrae One
vertebrae with adjacent
intervertebral disc



Art – No / S L 033
The lumbar vertebrae One
vertebrae with adjacent
intervertebral disc



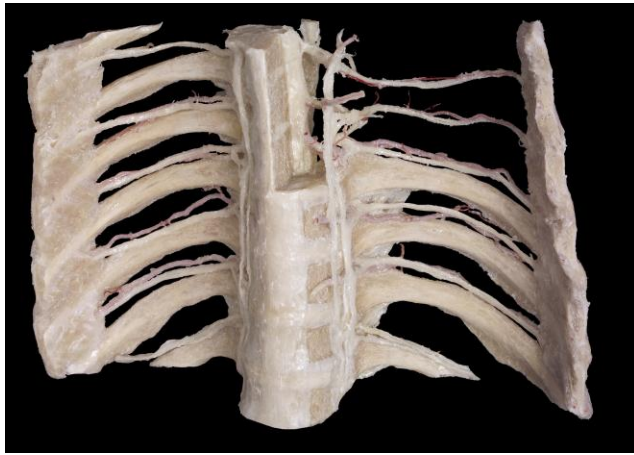
Art – No / S L034
The sacrum



Art – No / S L 035
The sternum with xiphoid
process



Art – No / S L 37
The skull of infant Showing the
cranial fontanelles.



Art – No / S L 39

The intervertebral joints Showing the intervertebral disc (fibrous ring and pulpiform nucleus), ligaments



Art – No / S L042

One half of male pelvis Cut sagittally, showing the ligaments of pelvic cavity



Art – No / S L 045

The spinal column Showing the correlative joints, ligaments, physiological curves, etc



Art – No / S L046

The shoulder joint reserve the correlative ligaments, open articular capsule to show the cavity_



Art – No / S L048
The elbow joint showing the three ligaments and articular surface



Art – No / S L049
The joints of hand Ligaments dissected, the wrist joint is coronally cut to show the articular disc and cavity



Art – No / S L050
The hip joint With sacrotuberous and sacrospinous ligaments



Art – No / S L051
The knee joint with the joint capsule removed, showing ligaments and articular cavity



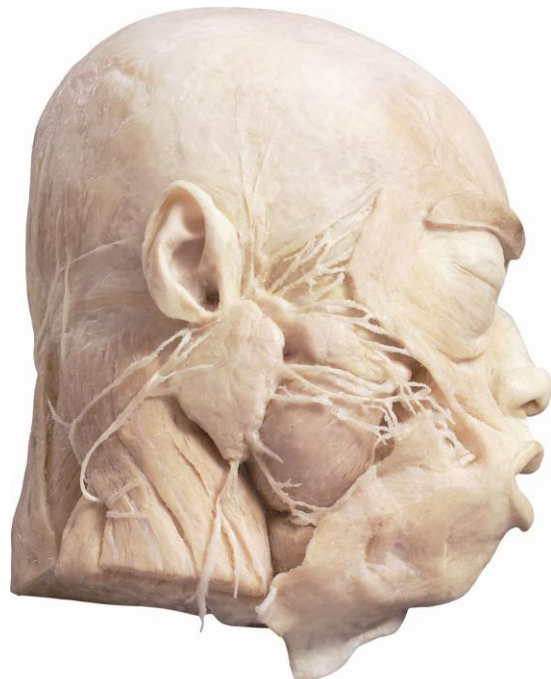
Art – No / S L052
Sagittal section of the knee joint



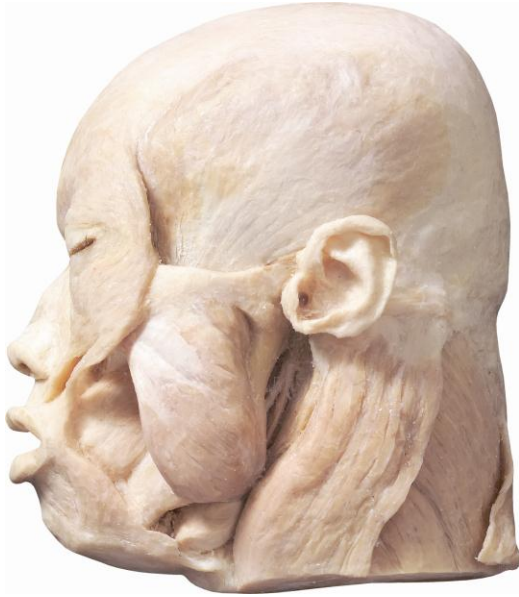
Art – No / S L 053
Meniscus with the patella and the patellar ligament reserved, showing the meniscus, cruciate ligament, transverse ligament etc



Art – No / S L054
The joints of the foot



Art – No / S L055
Half head specimen Superficial dissection



Art – No / S L056
Half head specimen deep
dissection



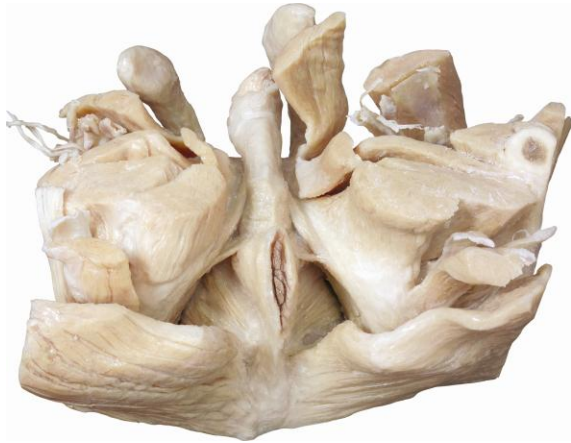
Art – No / S L059
The upper limb Superficial
muscle dissection, with arteries
and nerves



Art – No / S L 062
Muscles of hand superficial
muscle dissection



Art – No / S L065
The diaphragm without the
viscera



Art – No / S L068
The male perineal muscles
superficial muscle dissection, with
arteries and nerves



Art – No / S L070
The lower limb with half
pelvis attached, superficial
muscle dissection



Art – No / S L 076
Muscles of foot Superficial dissection of sole



Separated skull



Mandible



Scapula



Intervertebral joints



Temporomandibular joint



Sternocostal joint and sternoclavicular joint



Vertebral column



Atlanto-occipital and atlanto-axial joints



Hip joint (coronal section)



Elbow joint (sagittal section)



Elbow joint



Shoulder joint



Female pelvic ligaments (half)



Male pelvic ligaments (half)



Female pelvic ligaments (whole)



Male pelvic ligaments (whole)



Combined superficial dissection of whole head



Combined deep dissection of head and neck



Combined superficial dissection of head and neck



Muscles of mastication



Superficial muscles of the head



Medial and lateral pterygoids



Deep dissection of upper limb muscles



Superficial dissection of upper limb muscles



Deep muscles of leg



Superficial muscles of leg



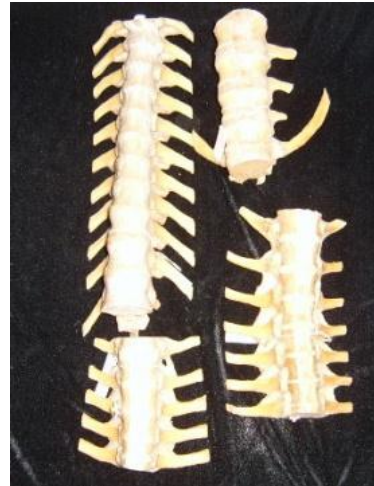
Deep muscles of the lower limb



Superficial muscles of the lower limb



Articulationes sternocostales



Anterior longitudinal ligament



Deep muscles of the foot



Middle muscles of the foot



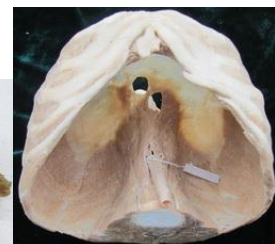
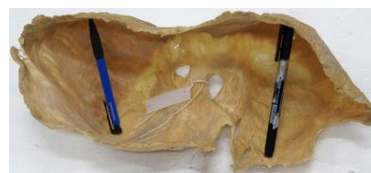
Combined middle dissection of foot muscles



Combined superficial dissection of foot muscles



Muscles of hip



Diaphragm



Inguinal canal



Diaphragm and muscles of the posterior abdominal wall



Muscles of the trunk (Child)



Muscles of the trunk (Adult)



Superficial dissection of face



Deep structure of face inferior to parotid gland



Deep blood vessels and nerves of facial lateral aspect (superficial layer)



Deep blood vessels and nerves of facial lateral aspect (deep layer)



Tentorium of cerebellum and sinuses of dura mater



Superficial structure of neck



Submandibular triangle



Carotid triangle



Internal and external carotid arteries and cranial nerves



Anterior region of neck



(superficial layer)



Dissection of head, neck, upper limb and thoracic cavity



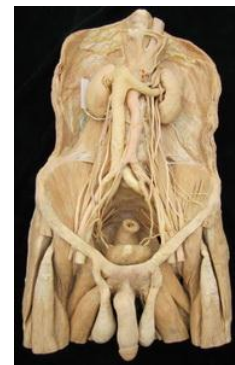
Blood vessels of stomach



Duodenum and pancreas



Distribution and relations of pancreas



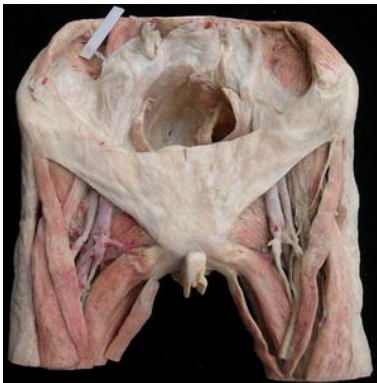
Structure of retroperitoneal space



The adjacent organs of kidneys



Muscles of male pelvic diaphragm



Female superficial perineal space



Dorsal artery and nerve of penis



Anterior wall of axillary fossa



Axillary lymph nodes