

# locomotice system

## Plastinated specimens I: Silicone specimens

### Regional specimens and organs

#### The locomotor system

Art-No.	Name	Description
SL001	The bones of the whole-body	Two hundred pieces of plastinated bones (without six auditory ossicles).
SL002	The whole skull	Without the hyoid bone.
SL003	Separated skull	Separated twenty-three bones, including the temporal bone, sphenoid bone, ethmoid bone etc, which are set up in situ with stainless steel frame.
SL004	Horizontal section of the skull	Displaying: foramen, groove, orifice, lamina, protuberance, impression etc.
SL005	Median-sagittal section of the skull	Displaying: groove, orifice, lamina, sinus etc; may remove the zygomatic arch to show the pterygopalatine fossa.
SL006	Coronary section of the skull	Display: groove, orifice, lamina, sinus etc.
SL007	The frontal bone	Showing the arch, foramen, process, groove, crest, and impression etc.
SL008	The parietal bone	Showing the angle, line, foramen, groove, tubercle, and diploic veins etc.
SL009	The sphenoid bone	Showing the sinus, foramen, canal, groove, and fissure etc clearly.
SL010	The temporal bone	Showing the groove, border, canal, orifice, foramen, and fossa etc clearly.
SL011	The maxilla	Showing the groove, crest, process, orifice, foramen, and fossa etc clearly.
SL012	The zygomatic bone and nasal bone	Showing the structures outside.
SL013	The ethmoid bone	Keeping the important structures intact, for example the lamina, foramen, groove, and wing.
SL014	The palatine bone	Keeping the important structures intact, for example the groove, process, notch, and crest.
SL015	The auditory ossicles	3 in number, putting in situ.
SL016	Tympanic cavity	Showing the facial nerve, cells, tympanic cavity (with temporal bone opened) , vestibular fossa of carotid etc.
SL017	Semicircular canal	Showing the intact semicircular canals and spiral canal of cochlea.
SL018	The mandible	
SL019	Structure of bone	the opened long bone, showing the structures of the bone.
SL020	The clavicle	
SL021	The scapula	
SL022	The humerus	

SL023	The radius and ulna	
SL024	The bones of the hand	27 in number.
SL025	The hip bone	
SL026	The femur	
SL027	The tibia and fibula	
SL028	The patella	
SL029	Bones of the foot	26 in number.
SL030	The atlas and axis	
SL031	The cervical vertebrae	One vertebrae with adjacent intervertebral disc.
SL032	The thoracic vertebrae	One vertebrae with adjacent intervertebral disc.
SL033	The lumbar vertebrae	One vertebrae with adjacent intervertebral disc.
SL034	The sacrum	
SL035	The sternum	With xiphoid process.
SL036	The costal bones	
SL037	The skull of infant	Showing the cranial fontanelles.
SL038	The temporomandibular joint	Showing the articular disc.
SL039	The intervertebral joints	Showing the intervertebral disc (fibrous ring and pulpiform nucleus), ligaments.
SL040	The atlantoaxial joint	Showing the cruciform ligament of atlas.
SL041	One half of female pelvis	Cut sagittally, showing the ligaments of pelvic cavity.
SL042	One half of male pelvis	Cut sagittally, showing the ligaments of pelvic cavity.
SL043	Full female pelvis	Showing the ligaments of pelvic cavity.
SL044	Full male pelvis	Showing the ligaments of pelvic cavity.
SL045	The spinal column	Showing the correlative joints, ligaments, physiological curves, etc.
SL046	The shoulder joint	Reserve the correlative ligaments, open articular capsule to show the cavity.
SL047	The elbow joint	With an intact articular capsule.
SL048	The elbow joint	Showing the three ligaments and articular surface.
SL049	The joints of hand	Ligaments dissected, the wrist joint is coronally cut to show the articular disc and cavity.
SL050	The hip joint	With sacrotuberal and sacrospinal ligaments.
SL051	The knee joint	With the joint capsule removed, showing ligaments and articular cavity.
SL052	Sagittal section of the knee joint	
SL053	Meniscus	With the patella and the patellar ligament reserved, showing the meniscus, cruciate ligament, transverse ligament etc.
SL054	The joints of the foot	Ligaments dissected, coronally cut to show the intertarsal joints and the anatomy of.
SL055	Half head specimen	Superficial dissection
SL056	Half head specimen	deep dissection
SL057	Full head specimen	Keeping the pharynx closed, showing the posterior aspect of the pharyngeal muscles.

SL058	Full head specimen	With stylohyoid muscles, pharynx opened, view upon larynx from rearside.
SL059	The upper limb	Superficial muscle dissection, with arteries and nerves.
SL060	The upper limb	Deep muscle dissection, with arteries and nerves.
SL061	The upper limb	Combined superficial and deep muscle dissection.
SL062	Muscles of hand	Superficial muscle dissection.
SL063	Muscles of hand	Deep muscle dissection.
SL064	The diaphragm	With part of spinal column, stomach, liver, spleen and pancreas.
SL065	The diaphragm	Without the viscera.
SL066	Muscles of trunk	Superficial muscle dissection.
SL067	Muscles of trunk	Deep muscle dissection.
SL068	The male perineal muscles	Superficial muscle dissection, with arteries and nerves.
SL069	The female perineal muscles	Superficial muscle dissection, with arteries and nerves.
SL070	The lower limb	With half pelvis attached, superficial muscle dissection.
SL071	The lower limb	With half pelvis attached, deep muscle dissection.
SL072	The lower limb	With half of pelvis attached, combined superficial and deep muscle dissection.
SL073	Muscles of hip and thigh	Bilateral, deep muscle dissection on one side, superficial muscle dissection on the other side.
SL074	Muscles of leg	Superficial muscle dissection
SL075	Muscles of leg	Deep muscle dissection.
SL076	Muscles of foot	Superficial dissection of sole.
SL077	Muscles of foot	Deep dissection of sole.



Art – No / S L 004  
Horizontal section of the skul



Art – No / S L005  
Median-sagittal section of the  
skull



Art – No / S L011  
The maxilla Showing the  
groove, crest, process, orifice,  
foramen, and fossa etc clearly



Art – No / S L015  
The auditory ossicles 3 in  
number, putting in situ



Art – No / S L 017  
Semicircular canal Showing the  
intact semicircular canals and  
spiral canal of cochlea



Art – No / S L019  
Structure of bone the opened  
long bone, showing the  
structures of the bone



Art – No / S L021  
The scapula



Art – No / S L024  
The bones of the hand 27 in  
number



Art – No / S L 027  
The tibia and fibula



Art – No / S L029  
Bones of the foot 26 in number



Art – No / S L 030  
The atlas and axis



Art – No / S L 031  
The cervical vertebrae One  
vertebrae with adjacent  
intervertebral disc



Art – No / S L 033  
The lumbar vertebrae One  
vertebrae with adjacent  
intervertebral disc



Art – No / S L034  
The sacrum

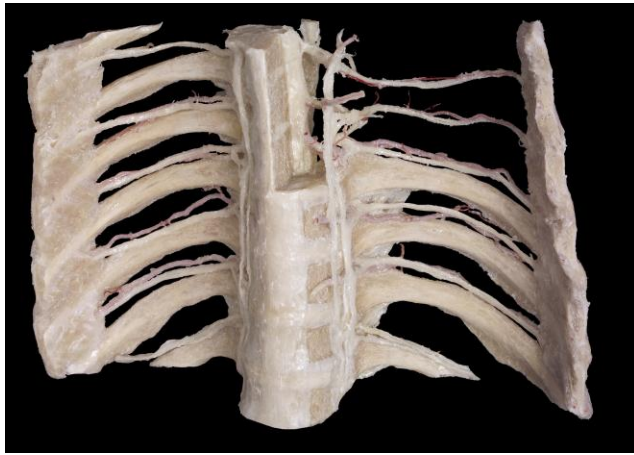


Art – No / S L 035  
The sternum with xiphoid  
process



Art – No / S L 37  
The skull of infant Showing the  
cranial fontanelles.





Art – No / S L 39

The intervertebral joints Showing the intervertebral disc (fibrous ring and pulpiform nucleus), ligaments



Art – No / S L042

One half of male pelvis Cut sagittally, showing the ligaments of pelvic cavity



Art – No / S L 045

The spinal column Showing the correlative joints, ligaments, physiological curves, etc



Art – No / S L046

The shoulder joint reserve the correlative ligaments, open articular capsule to show the cavity\_





Art – No / S L048  
The elbow joint showing the three ligaments and articular surface



Art – No / S L049  
The joints of hand Ligaments dissected, the wrist joint is coronally cut to show the articular disc and cavity



Art – No / S L050  
The hip joint With sacrotuberous and sacrospinous ligaments



Art – No / S L051  
The knee joint with the joint capsule removed, showing ligaments and articular cavity



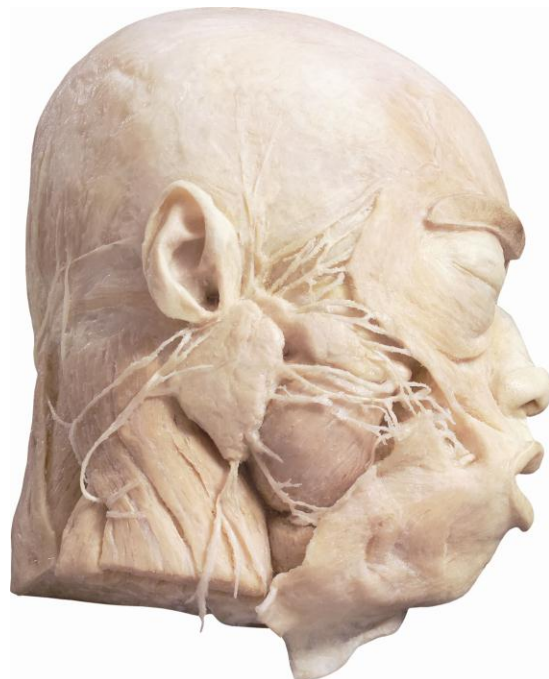
Art – No / S L052  
Sagittal section of the knee joint



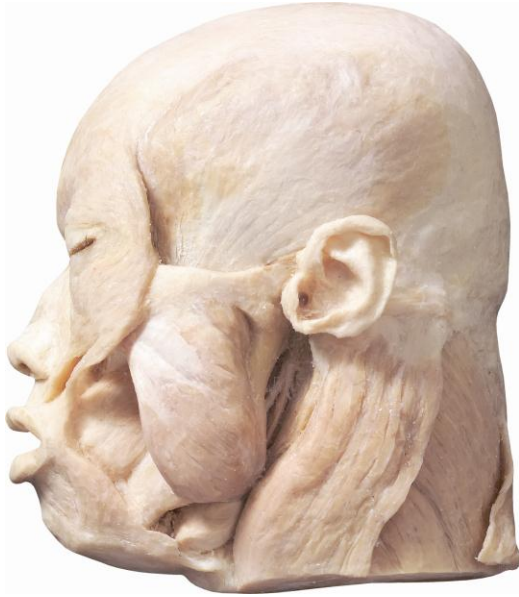
Art – No / S L 053  
Meniscus with the patella and the patellar ligament reserved, showing the meniscus, cruciate ligament, transverse ligament etc



Art – No / S L054  
The joints of the foot



Art – No / S L055  
Half head specimen Superficial dissection



Art – No / S L056  
Half head specimen deep  
dissection



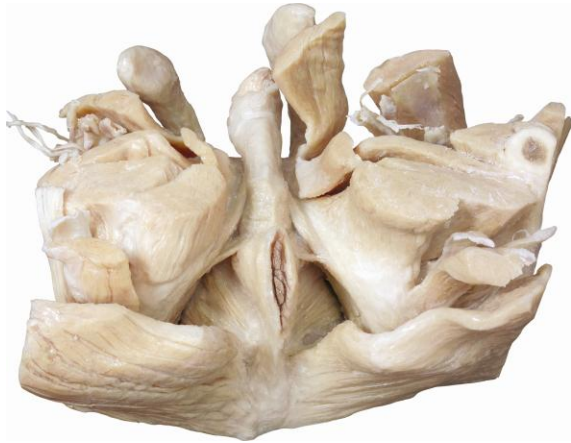
Art – No / S L059  
The upper limb Superficial  
muscle dissection, with arteries  
and nerves



Art – No / S L 062  
Muscles of hand superficial  
muscle dissection



Art – No / S L065  
The diaphragm without the  
viscera



Art – No / S L068  
 The male perineal muscles  
 superficial muscle dissection, with  
 arteries and nerves



Art – No / S L070  
 The lower limb with half  
 pelvis attached, superficial  
 muscle dissection



Art – No / S L 076  
 Muscles of foot Superficial dissection of sole





Separated skull



Mandible



Scapula



Intervertebral joints



Temporomandibular joint



Sternocostal joint and sternoclavicular joint



Vertebral column



Atlanto-occipital and atlanto-axial joints



Hip joint (coronal section)



Elbow joint (sagittal section)



Elbow joint



Shoulder joint



Female pelvic ligaments (half)



Male pelvic ligaments (half)



Female pelvic ligaments (whole)



Male pelvic ligaments (whole)



Combined superficial dissection of whole head



Combined deep dissection of head and neck



Combined superficial dissection of head and neck



Muscles of mastication



Superficial muscles of the head



Medial and lateral pterygoids





Deep dissection of upper limb muscles



Superficial dissection of upper limb muscles



Deep muscles of leg



Superficial muscles of leg



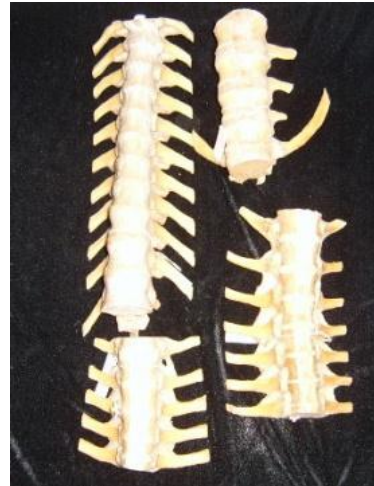
Deep muscles of the lower limb



Superficial muscles of the lower limb



Articulationes sternocostales



Anterior longitudinal ligament



Deep muscles of the foot



Middle muscles of the foot



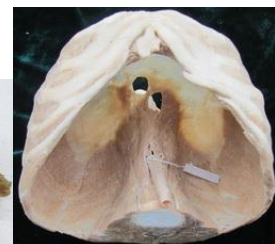
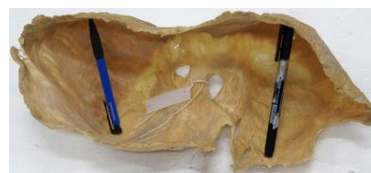
Combined middle dissection of foot muscles



Combined superficial dissection of foot muscles



Muscles of hip



Diaphragm



Inguinal canal



Diaphragm and muscles of the posterior abdominal wall



Muscles of the trunk (Child)



Muscles of the trunk (Adult)



Superficial dissection of face



Deep structure of face inferior to parotid gland



Deep blood vessels and nerves of facial lateral aspect (superficial layer)



Deep blood vessels and nerves of facial lateral aspect (deep layer)



Tentorium of cerebellum and sinuses of dura mater



Superficial structure of neck



Submandibular triangle



Carotid triangle





Internal and external carotid arteries and cranial nerves



Anterior region of neck



(superficial layer)



Dissection of head, neck, upper limb and thoracic cavity



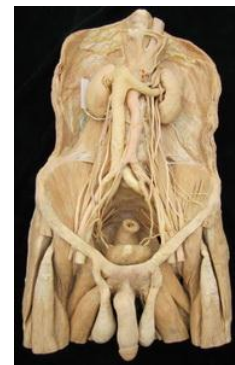
Blood vessels of stomach



Duodenum and pancreas



Distribution and relations of pancreas



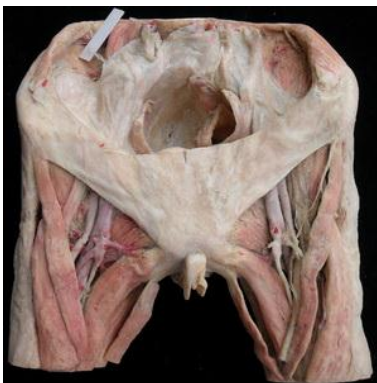
Structure of retroperitoneal space



The adjacent organs of kidneys



Muscles of male pelvic diaphragm



Female superficial perineal space



Dorsal artery and nerve of penis



Anterior wall of axillary fossa



Axillary lymph nodes