

respiratory system

Art-No.	Name	Description
SR001	General survey of respiratory system	Half of head, reserving lung on one side, showing bronchial tree on the other side.
SR002	The shape of larynx	With the tongue and thyroid gland.
SR003	Median sagittal section of larynx	Unilateral.
SR004	The laryngeal cavity	Open the posterior wall of the laryngeal cavity, showing the structures in it.
SR005	The laryngeal cartilages	
SR006	The laryngeal muscles	
SR007	The elastic cone	
SR008	The larynx, trachea and principal bronchi	
SR009	The larynx, trachea, principal bronchi	With the lobar and segmental bronchi.
SR010	The larynx, trachea, principal bronchi and lung	
SR011	The hilus of lung	Showing the shape and structure of unilateral lung
SR012	The lung	Without heart
SR013	The lung	With heart.
SR014	The mediastinum	Showing the structure of left and right mediastinum



Muscles of larynx



General arrangement of the respiratory system



Cartilages and ligaments of larynx



Median sagittal section of larynx



Tongue, larynx, trachea and bronchi



Slice of lung



Trachea



Larynx, trachea and bronchi



Double lungs



Double lungs and heart



Mediastinum



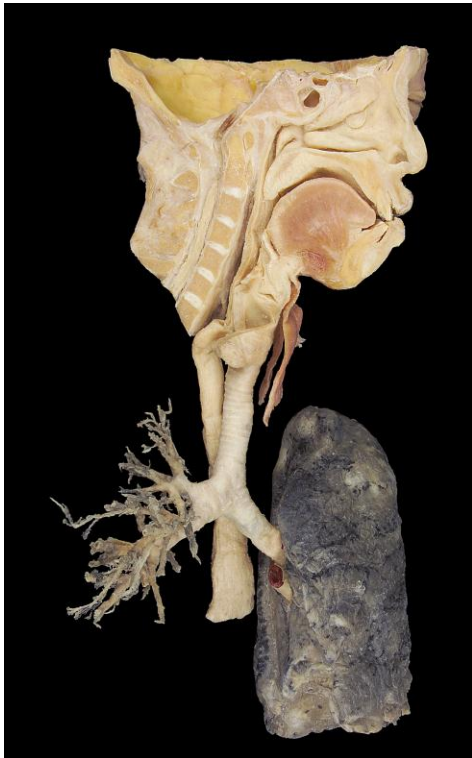
Root of lung



Bronchial tree



Lung and bronchial tree



Art – N0 / S R 001

Half of head, reserving lung on one side, showing bronchial tree on the other side



Art – N0 / S R 002

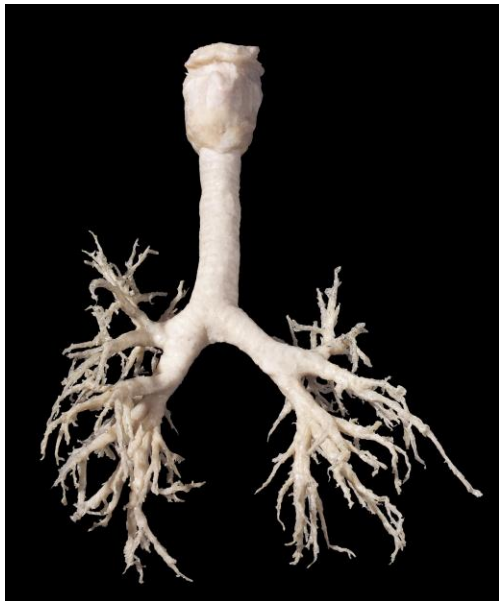
Larynx With the tongue and thyroid gland



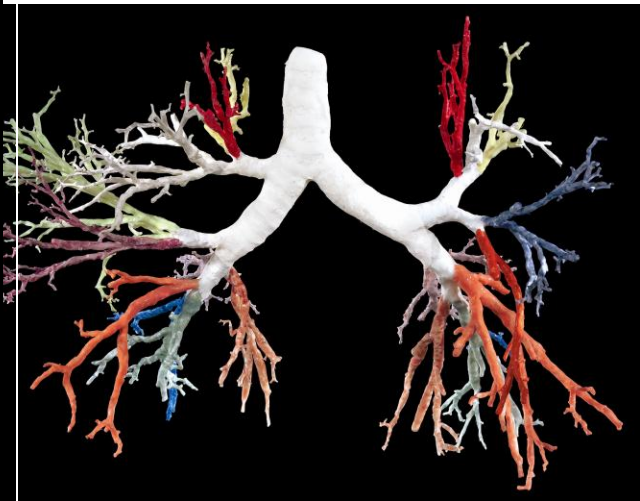
Art – N0 / S R 003
Median sagittal section of larynx



Art – N0 / S R 005
The laryngeal cartilages



Art – N0 / S R 008
The larynx, trachea and principal bronchi



Art – N0 / S R 009
The larynx, trachea, principal bronchi
With the lobar and segmental bronchi



Art – N0 / S R 013
The lung with heart



Art – N0 / S R 014
The mediastinum Showing the structure
of left and right mediastinum