

circulatory system

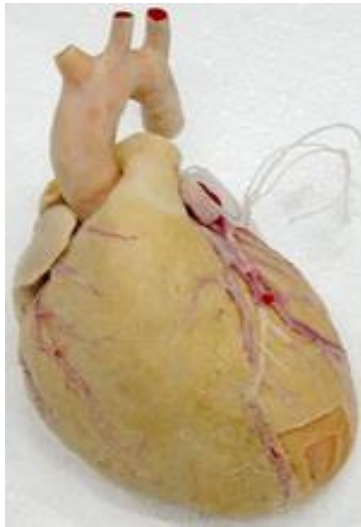
Art-No.	Name	Description
SC001	Heart	Not injected, opened.coronally.
SC002	Heart	Not injected, with cut windows.
SC003	Heart	Removing pericardium, showing the shape of the heart and its coronary arteries.
SC004	Heart	Double injected, cut in 2 halves.
SC005	Heart	Double injected, with cut windows.
SC006	Cardiac valves	Eliminate cardiac atrium, showing atrioventricular valves and arterial valves.
SC007	Conducting system of the heart	Cattle heart, intactness
SC008	Aorta	Normal artery or low-grade arteriosclerosis, 15 cm in length.
SC009	Venous valve	
SC010	External carotid artery and its branches	Unilateral
SC011	The branches of the facial artery and maxillary artery	Unilateral
SC012	Arteries of the upper limb	Showing the branches of axillary artery, brachial artery, radial artery and ulnar artery.
SC013	Arteries of the forearm	Showing the branches of radial artery, ulnar artery and their recurrent arteries.
SC014	Superficial palmar arch	
SC015	Deep palmar arch	
SC016	Arteries of lower limb	Showing the branches of femoral artery, popliteal artery, anterior tibial artery, posterior tibial artery and peroneal artery.
SC017	Arteries of leg	Showing the branches of anterior tibial artery, posterior tibial artery and peroneal artery.
SC018	Plantar arteries	
SC019	Celiac trunk and its branches	With a segment of trunk, showing the branches of left gastric artery, common hepatic artery and splenic artery.
SC020	Superior mesenteric artery and its branches	
SC021	Inferior mesenteric artery and its branches	
SC022	Arteries of male pelvic cavity	Showing the branches of common iliac artery
SC023	Arteries of female pelvic cavity	Showing the important branches of uterine artery
SC024	Veins of head and neck	Unilateral
SC025	Superficial veins of the upper limb	
SC026	Vena cava and their tributaries	Showing the azygos vein, hemiazygos vein and thoracic duct.
SC027	Superficial veins of the lower limb	Showing the great saphenous vein and its tributaries, the small saphenous vein
SC028	Hepatic portal vein system and its tributaries	



External features and blood vessels of the heart



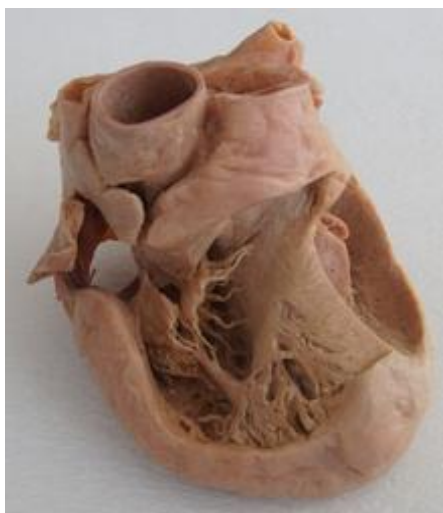
Valves and fibrous rings of the heart



Cardiac muscles



Chambers of the heart



Inner structure of heart



Facial artery and maxillary artery



External carotid artery and its branches



Arteries of upper limb



Inferior mesenteric artery and its branches



Superior mesenteric artery and its branches



Celiac trunk and its branches



Ileocolic artery and its branches



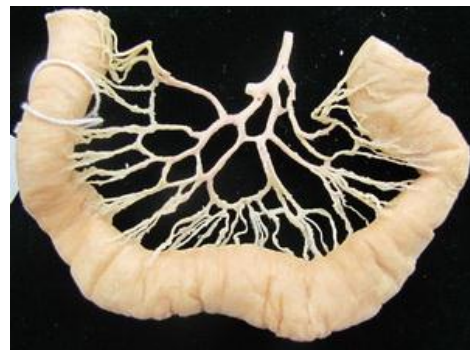
Arteries of male pelvic cavity



Arteries of female pelvic cavity



Superior vena cava and its tributaries



The arches of intestinal artery



Hepatic portal vein and its tributaries



Veins of posterior wall of trunk



Superficial veins of lower limb



Superficial veins of upper limb



Arteries of lower limb



Dorsal superficial veins of hand



Arteries of foot



Dorsal superficial veins of foot



Deep arteries of hand



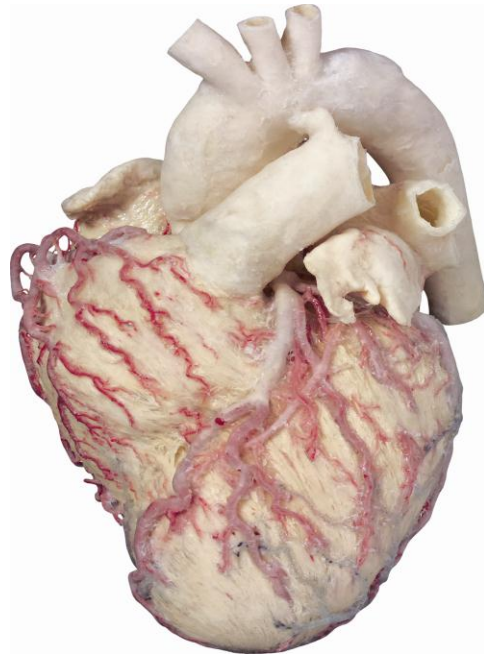
Superficial arteries of hand



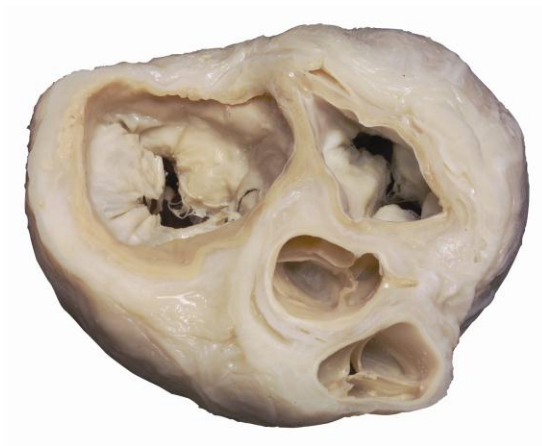
Spleen



SC 002
Heart Not injected, with cut
windows



SC 003
Heart removing pericardium,
showing the shape of the heart and
its coronary arteries



SC 006
Cardiac valves Eliminate cardiac
atrium, showing atrioventricular
valves and arterial valves



SC 004
Heart Double injected, cut in 2
halves



SC 008
Aorta



SC 009
Venous valve



SC 0014
Superficial palmar arch



SC 0015
Deep palmar arch