

# Transparent Slices

## Transparent slices of head and neck

Art-No.	Name	Description
EH001	Head slice	Horizontal plane, on the level of upper part of brain.
EH002	Head slice	Horizontal plane, on the level of middle part of brain.
EH003	Head slice	Horizontal plane, on the level of lower part of brain.
EH004	Head slice	Horizontal plane, on the level of paranasal sinuses.
EH005	Head slice	Median-sagittal plane
EH006	Head slice	Parasagittal plane.
EH007	Head slice	Median-coronal plane.
EH008	Neck slice	Horizontal plane, on the level of root of neck.
EH009	Neck slice	Horizontal plane, on the level of middle part of neck.
EH010	Set of head slices	Serially cut, horizontal plane, about 15 slices, 3 mm thickness.
EH011	Set of head slices	Serially cut, coronal plane, about 15 slices, 3 mm thickness.
EH012	Set of head slices	Serially cut, sagittal plane, about 15 slices, 3 mm thickness.
EH013	Set of head slices	Horizontal plane, 8 head slices and 2 neck slices, 3 mm thickness.

## Transparent slices of trunk

Art-No.	Name	Description
ET001	Trunk slice	Horizontal plane, on the level of shoulder.
ET002	Trunk slice	Horizontal plane, on the level of lungs.
ET003	Trunk slice	Horizontal plane, on the level of heart.
ET004	Trunk slice	Horizontal plane, on the level of spleen.
ET005	Trunk slice	Horizontal plane, on the level of pancreas.
ET006	Trunk slice	Horizontal plane, on the level of liver.
ET007	Trunk slice	Horizontal plane, on the level of small intestine.
ET008	Trunk slice	Horizontal plane, on the level of kidneys.
ET009	Trunk slice	Horizontal plane, on the level of female ovaries (the superior part of urogenital system).
ET010	Trunk slice	Horizontal plane, on the level of female urinary bladder (the middle part of urogenital system).

ET011	Trunk slice	Horizontal plane, on the level of female vagina (the inferior part of urogenital system).
ET012	Trunk slice	Horizontal plane, on the level of male seminal vesicles (the superior part of urogenital system).
ET013	Trunk slice	Horizontal plane, on the level of male bulb of urethra (the middle part of urogenital system).
ET014	Trunk slice	Horizontal plane, on the level of male testes (the inferior part of urogenital system).
ET015	Set of trunk slices	Horizontal plane, Serially cut, 3 mm thickness, about 30 slices.

### Transparent slices of upper limb

Art-No.	Name	Description
EU001	Upper limb slice	Horizontal plane, on the level of shoulder.
EU002	Upper limb slice	Horizontal plane, on the level of elbow.
EU003	Upper limb slice	Horizontal plane, on the level of forearm.
EU004	Upper limb slice	Horizontal plane, on the level of wrist.
EU005	Upper limb slice	Sagittal slice of the elbow joint.
EU006	Upper limb slice	Sagittal slice of the hand.
EU007	Upper limb slice	Coronal slice of the elbow joint.
EU008	Upper limb slice	Coronal transparent slice of the hand.
EU009	Upper limb slices	Horizontal plane, Series sections of arm, with 3 mm thickness, about 10 slices.
EU010	Upper limb slices	Horizontal plane, Series sections of forearm, with 3 mm thickness, about 10 slices.
EU011	Upper limb slices	Sagittal plane, Series sections of elbow, with 3 mm thickness, about 3 slices.
EU012	Upper limb slices	Coronal plane, Series sections of hand, with 3 mm thickness, about 3 slices.

### Transparent slices of lower limb

Art-No.	Name	Description
EL001	Lower limb slice	Horizontal plane, on the level of thigh.
EL002	Lower limb slice	Horizontal plane, on the level of knee.
EL003	Lower limb slice	Horizontal plane, on the level of leg.
EL004	Lower limb slice	Horizontal plane, on the level of ankle.
EL005	Lower limb slice	Horizontal plane, on the level of metatarsus bones.
EL006	Lower limb slice	Sagittal plane, on the level of the knee joint.
EL007	Lower limb slice	Sagittal plane, on the level of the foot.

EL008	Lower limb slice	Coronal plane, on the level of the knee joint.
EL009	Lower limb slice	Coronal plane, on the level of the foot.
EL010	Lower limb slices	Series of horizontal slices of thigh, with 3 mm thickness, about 10 slices.
EL011	Lower limb slices	Series of horizontal slices of leg, with 3 mm thickness, about 10 slices.
EL012	Lower limb slices	Series of sagittal slices of the knee joint, with 3 mm thickness, about 5 slices.
EL013	Lower limb slices	Series of sagittal slices of foot, with 3 mm thickness, about 5 slices.

### Transparent slices of brain

Art-No.	Name	Description
EB001	Brain slice	Horizontal plane, unspecified level.
EB002	Brain slice	Sagittal plane of brain.
EB003	Brain slice	Coronal plane, unspecified level.
EB004	Brain slice	Median-coronal plane.
EB005	Brain slice	Sagittal section, unspecified level.
EB006	Brain slice	Median-sagittal plane, showing the mesencephalic aqueduct.
EB007	Set of brain slices	Series of horizontal brain slices, with 3 mm thickness, about 10 slices.
EB008	Set of brain slices	Series of coronal brain slices, with 3 mm thickness, about 10 slices.
EB009	Set of brain slices	Series of sagittal brain slices, with 3 mm thickness, about 10 slices.

### Series of whole body's transparent slices

Art-No.	Name	Description
EW001	Set of slices of the whole body	Sagittal slices of head, neck, elbow, knee and foot; horizontal slices of the rest.



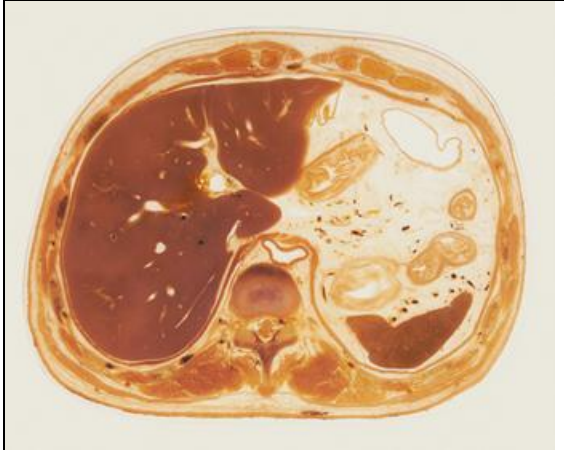
Art – No / E H 012

Set of head slices  
Serially cut, sagittal plane, about 10  
slices, 3 mm thickness



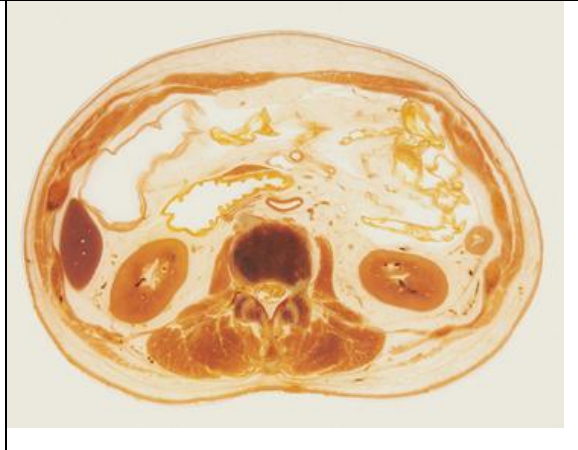
Art – No / E T 002

Trunk slice  
Horizontal plane, on the level of lungs



Art – No / E T 006

Trunk slice  
Horizontal plane, on the level of liver



Art – No / E T 008

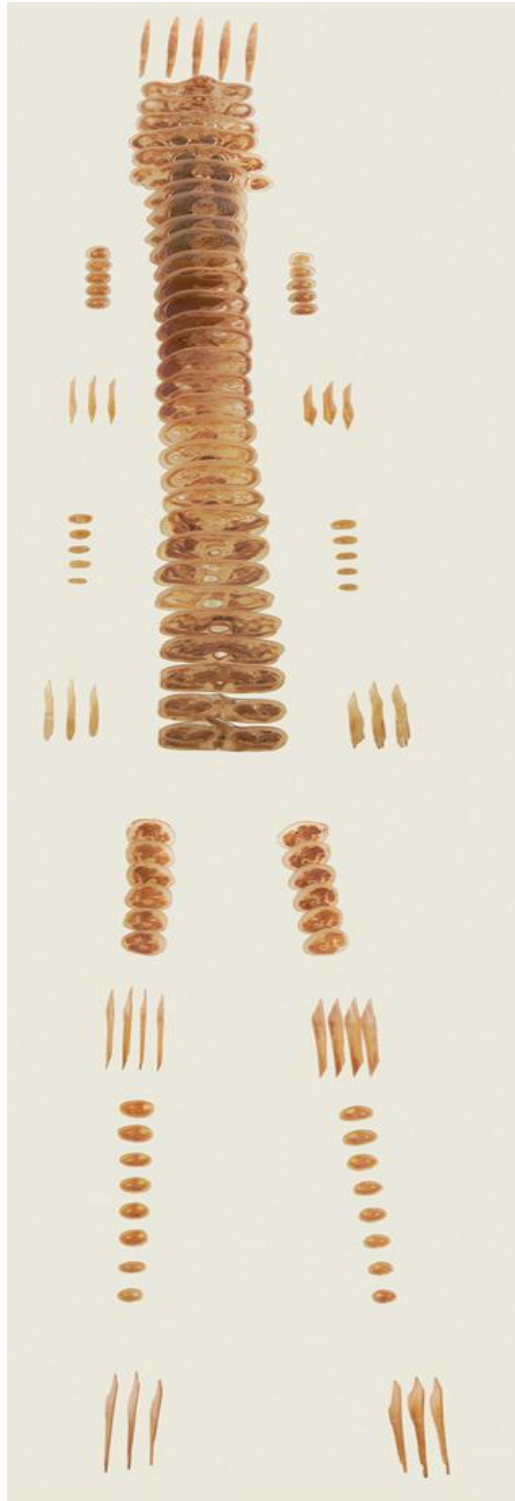
Trunk slice  
Horizontal plane, on the level of kidneys



Set of slices of the whole body. Serially cut, sagittal plane, about 11 slices

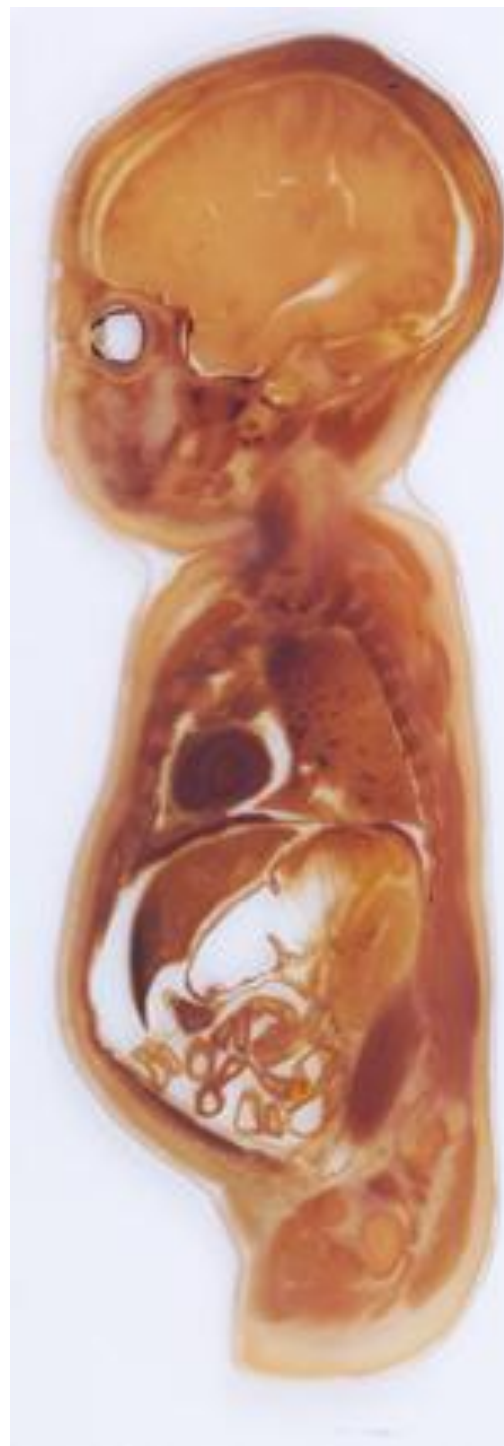
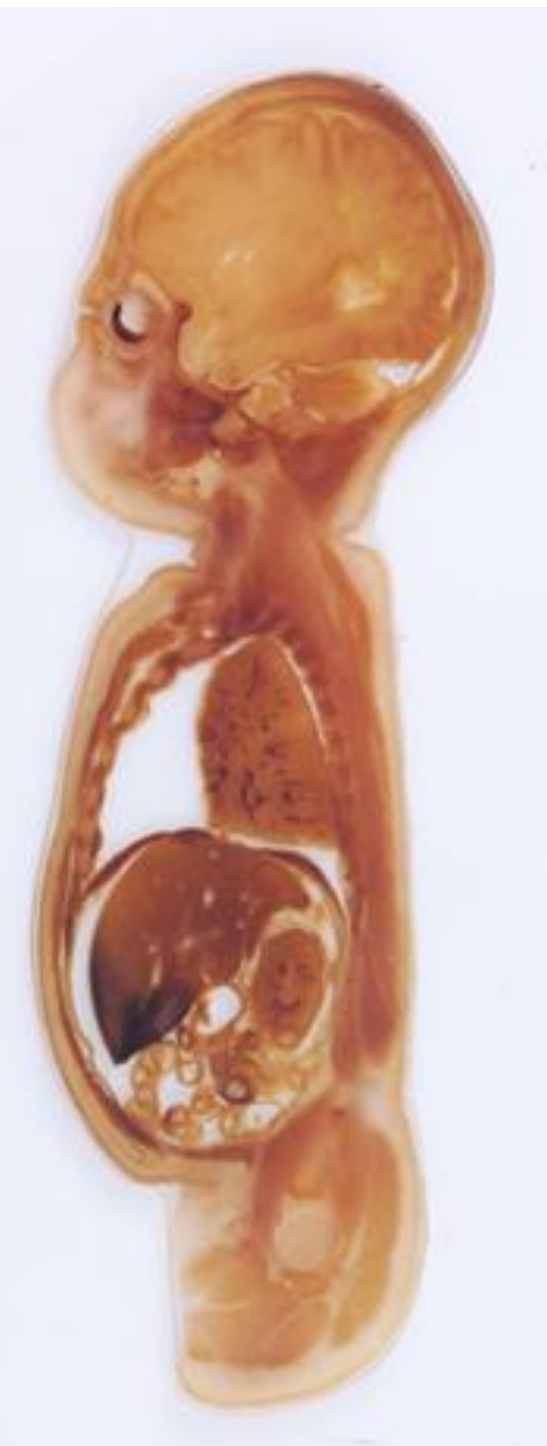


Set of slices of the whole body. Serially cut, coronal plane, about 6 slices



Art – No / E W 001  
Set of slices of the whole body  
Serially cut, sagittal plane of head, neck, elbow, knee and foot; horizontal  
plane of the rest





The transparent slice of fetus.



Slices Chest



EB 002 Coronal plane in Brain



EB 005 Sagittal Section in Brain