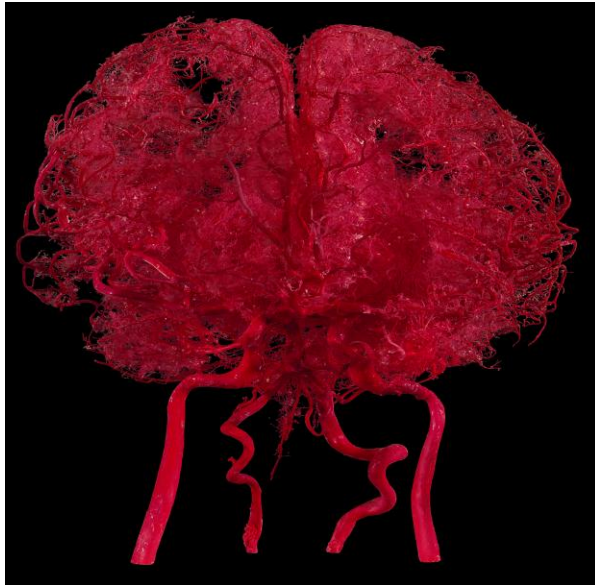


cast specimens

Art-No.	Name	Description
C001	Brain arteries	Whole arteries of brain.
C002	Arteries of head	Arterial branches in head, without skull
C003	Veins of head	Venous tributaries in head, without skull
C004	Head artery and skull	Showing the branches of arteries, with the skull reserved.
C005	Head veins and skull	Showing the tributaries of veins in head, with the skull reserved.
C006	Head arteries and veins with skull	A. and v. branches in head, with skull
C007	Cerebral ventricle	Showing the cerebral ventricle system
C008	Arteries of one upper limb	Showing the arterial branches of unilateral upper limb.
C009	Blood vessels of one upper limb	Showing the branches of arteries and veins of unilateral upper limb.
C010	Arteries and bones of upper limb	With skeleton.
C011	Veins of upper limb	Showing the tributaries of deep and superficial veins of unilateral upper limb.
C012	Arteries of the hand	Showing the superficial and deep palmar arch and their branches.
C013	Arteries of one lower limb	Showing the arterial branches of unilateral lower limb.
C014	Arteries and bones of lower limb	With skeleton.
C015	Arteries of bilateral lower limbs	Showing the branches of arteries of bilateral lower limbs.
C016	Blood vessels of one lower limb	Showing the branches of arteries and veins of unilateral lower limb.
C017	Veins of lower limb	Showing the tributaries of deep and superficial veins of unilateral lower limb.
C018	Arteries of pelvis	
C019	Arteries and veins of pelvis	
C020	Arteries of foot	Artery branches of dorsal pedal a. and plantar arch
C021	Artery of heart	Large branches of aorta and coronary artery, in red color
C022	Coronary artery	Two coronary a. were shown in two colors
C023	Blood vessels of heart	Both a. and v. system of one heart
C024	Veins of heart	Showing the cardiac veins, in blue color.
C025	Casting specimen of heart and lungs	
C026	The bronchi	bronchi and branches of two lungs
C027	Pulmonary artery	Showing the pulmonary artery and bronchial tree simultaneously.
C028	Pulmonary veins	Showing the pulmonary veins and bronchial tree simultaneously.

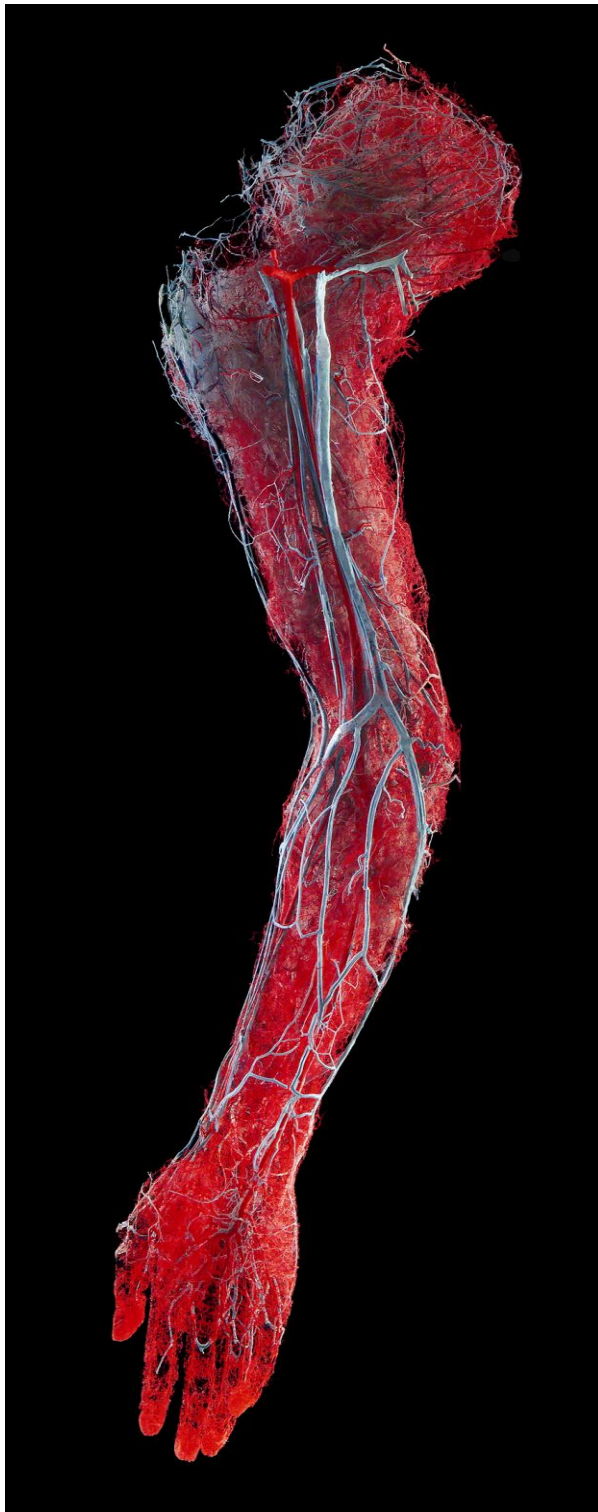
C029	Pulmonary artery and veins	Showing the pulmonary artery, pulmonary veins and bronchial tree simultaneously.
C030	Casting specimen of liver	Showing the hepatic artery, hepatic veins and hepatic duct system, simultaneously.
C031	Hepatic portal vein system	
C032	Casting specimen of kidney	Arteries of kidney and renal pelvis
C033	Casting specimen of kidney	Showing the renal artery, vein and pelvis.
C034	Casting specimen of kidney	Showing the bilateral arteries and pelvis of kidneys
C035	Casting specimen of kidney	Showing the ureter and renal pelvis
C036	Splenic artery	Showing the artery of spleen
C037	Pancreatic duct and splenic artery	Showing the branch of pancreatic duct and splenic artery
C038	Casting specimen of stomach	Showing the branches of left and right gastric artery.
C039	Blood vessels of small intestinal	Showing the arterial arch of intestinal canal.
C040	Arteries of ileocecum	Arteries of ileocecal area, especially appendix
C041	Arteries and veins of ileocecum	Arteries and veins of ileocecal area, especially appendix
C042	Blood vessels of placenta	Showing the arteries and veins of placenta simultaneously.
C043	Arteries of placenta	Showing the arterial system of placenta.
C044	Veins of placenta	Showing the venous system of placenta.
C045	Casting specimen of parotid	Showing the parotid duct system.
C046	Arteries of thoracic wall	Showing the branches of left and right internal thoracic artery.
C047	Adult arterial system of whole body	Branches of artery in a whole adult body



Art - No : C001
Ventricles of the brain



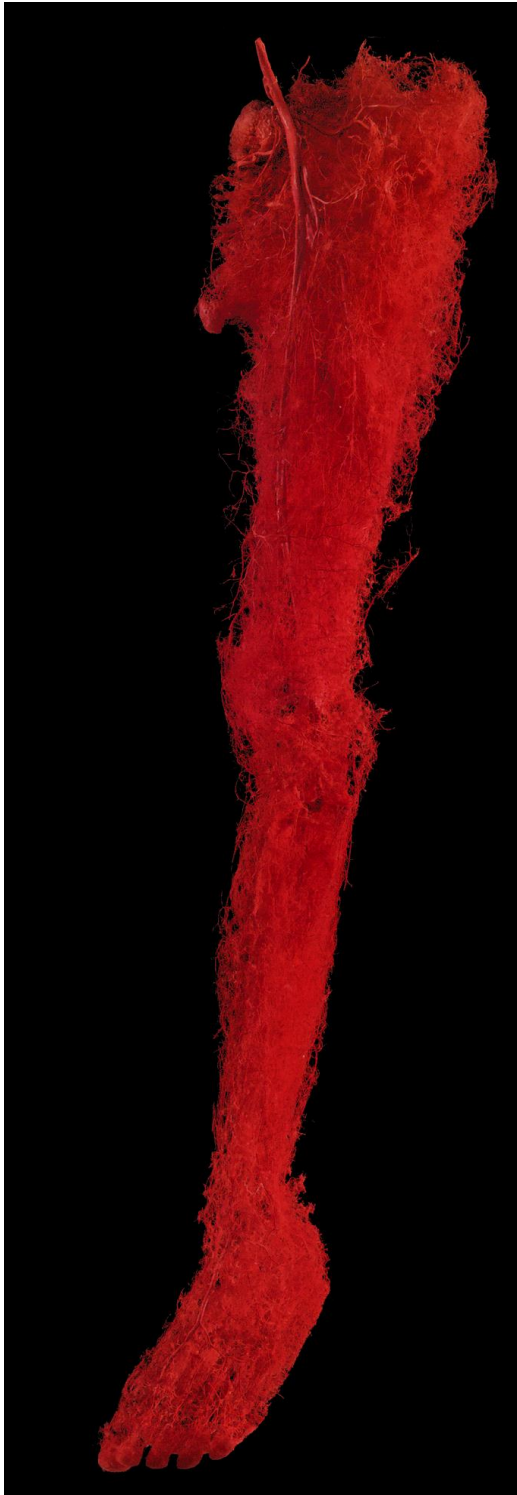
Art - No : C004
Blood vessels of head and neck - With bones



Art - No : C009
Arteries of upper limb
Without bones



Art - No : C008
Blood vessels of upper limb
Without bones



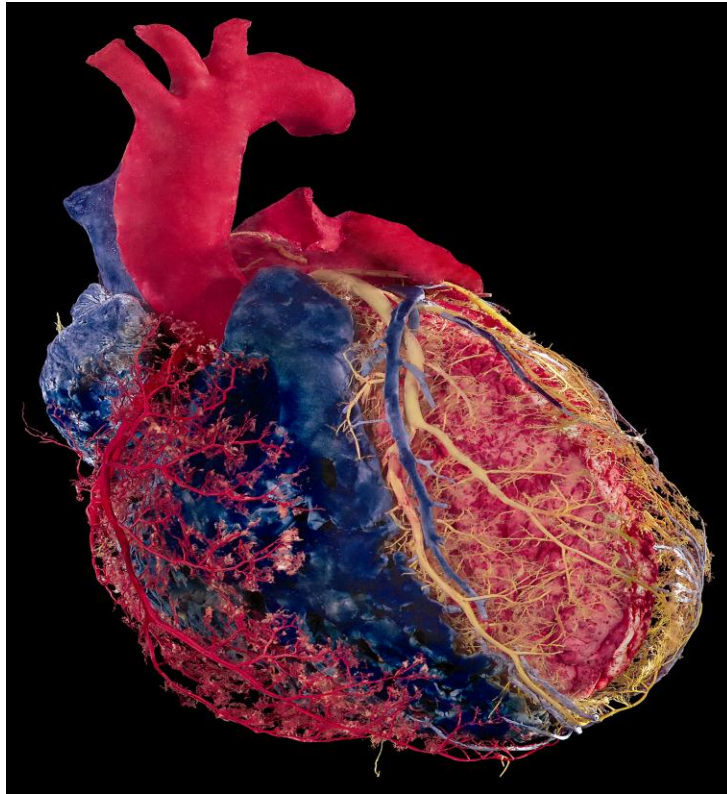
Art - No : C013
Blood vessels of lower limb
Without bones



Art - No : C010
Arteries of upper limb
With bones

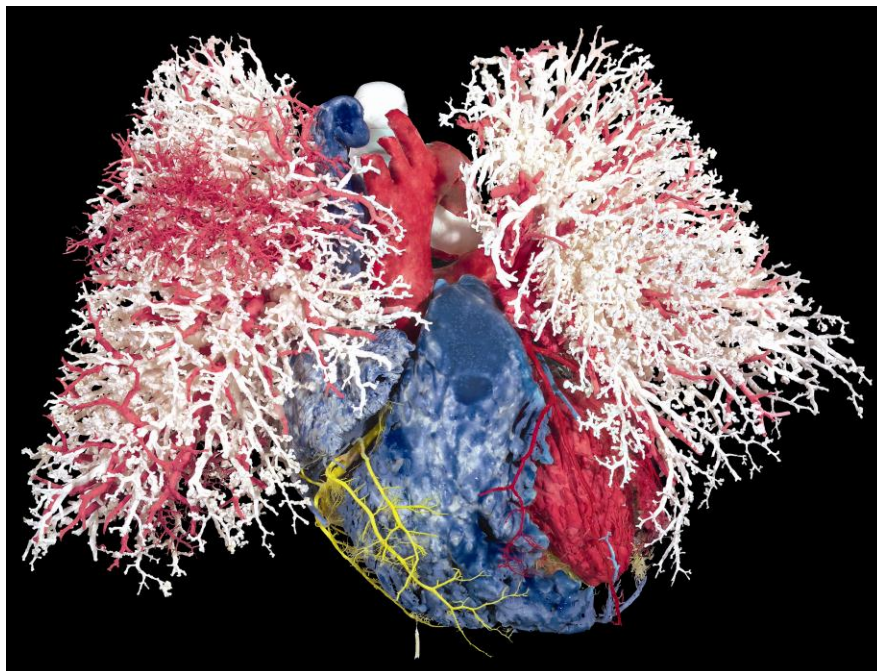


Art - No : C014
Arteries of lower limb
- With bones



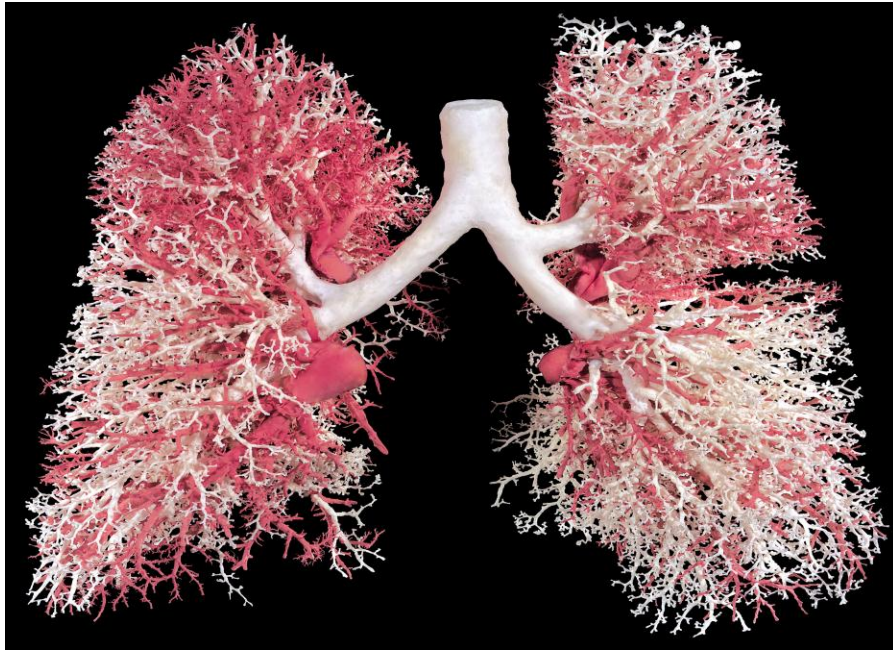
Art - No : C022

Coronary artery - Two coronary a. were shown in two colors Lungs



Art - No : C025

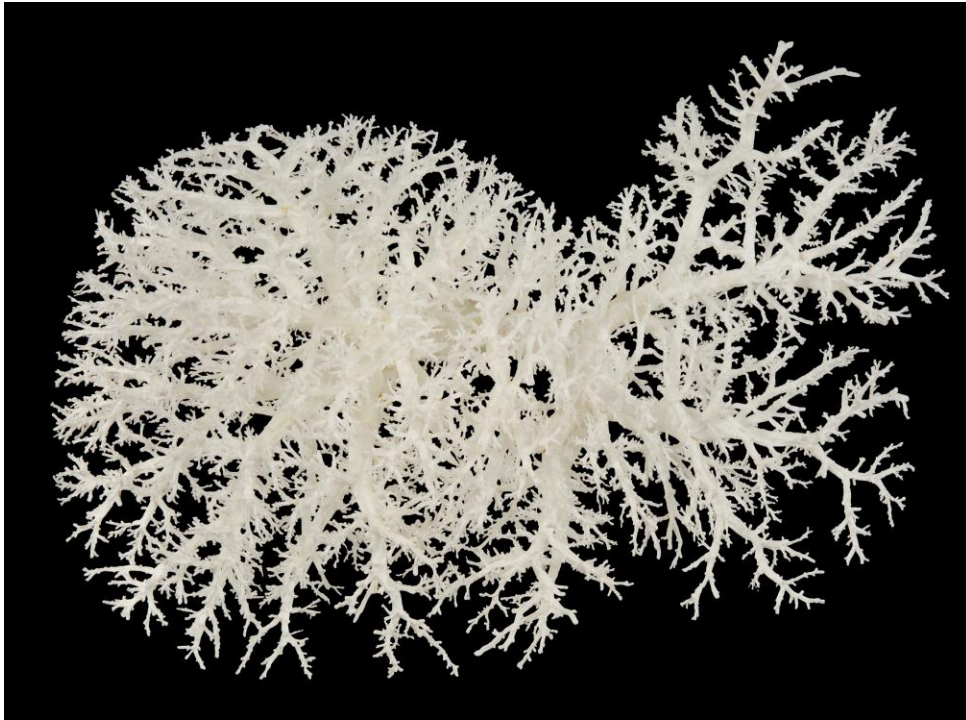
Lungs and heart



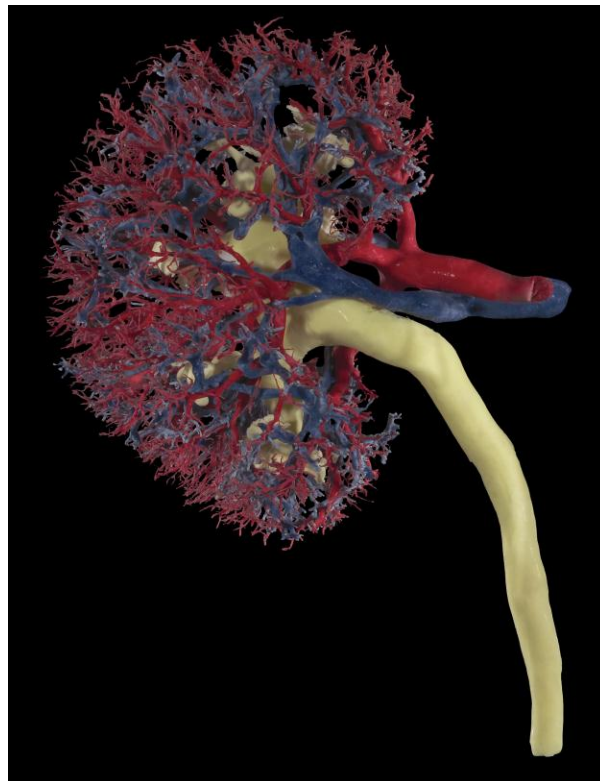
Art - No : C028 Pulmonary veins
Showing the pulmonary veins and bronchial tree simultaneously



Art - No : C030 Casting specimen of liver
Showing the hepatic artery, hepatic veins and hepatic duct system



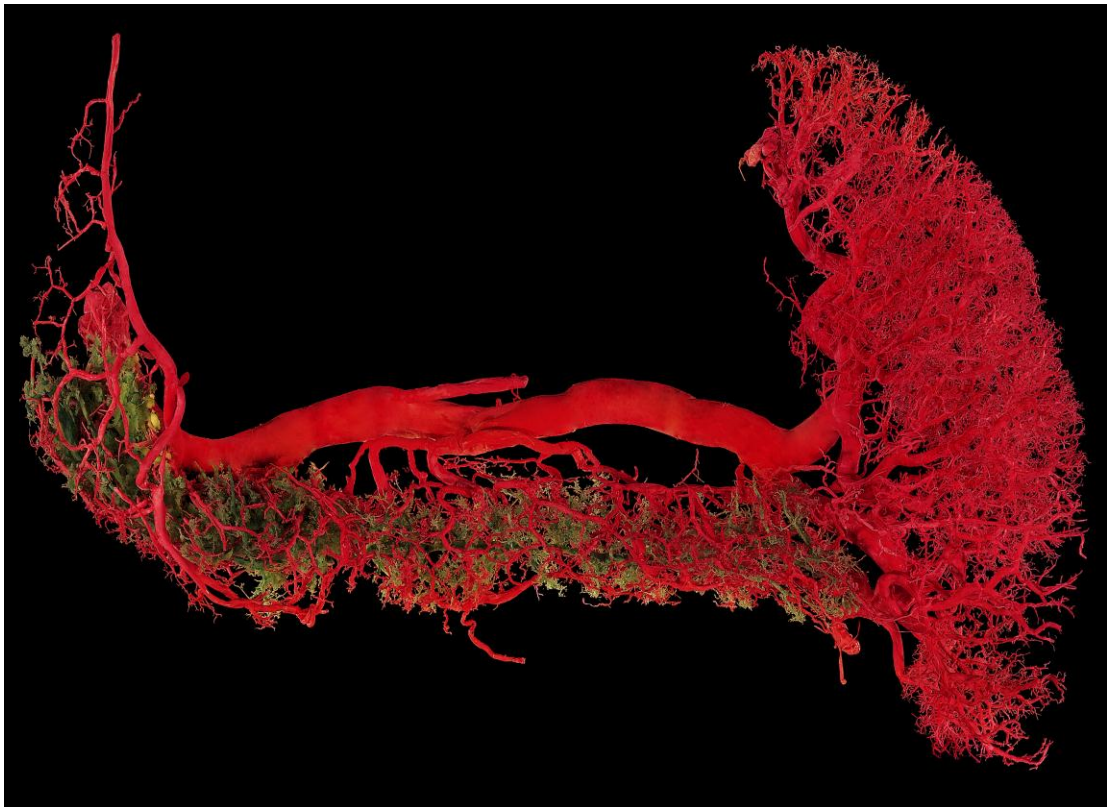
Art - No : C031
Hepatic portal vein system



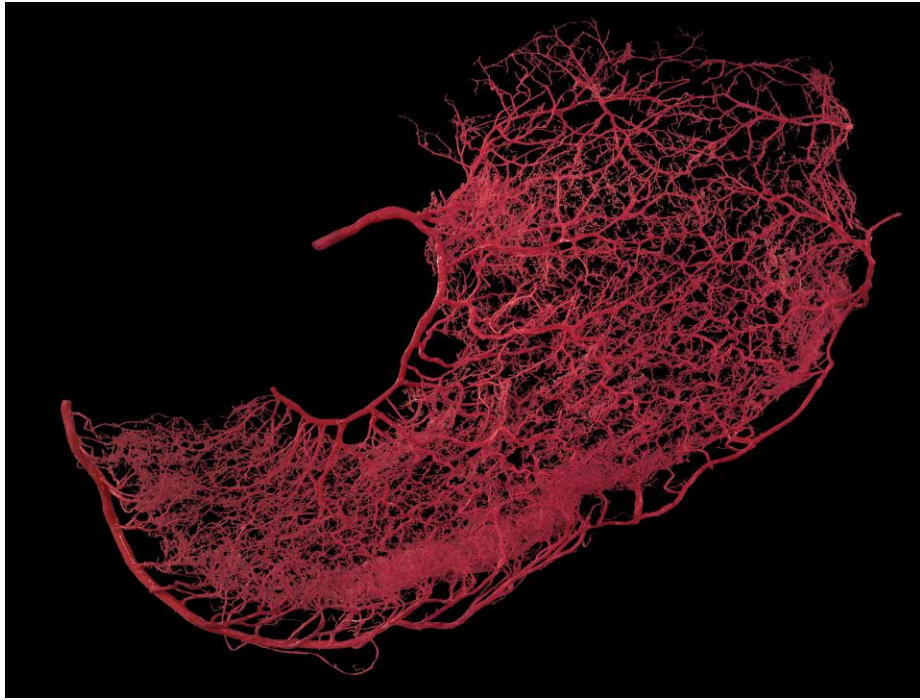
Art - No : C033
Kidney showing the renal artery, vein and pelvis



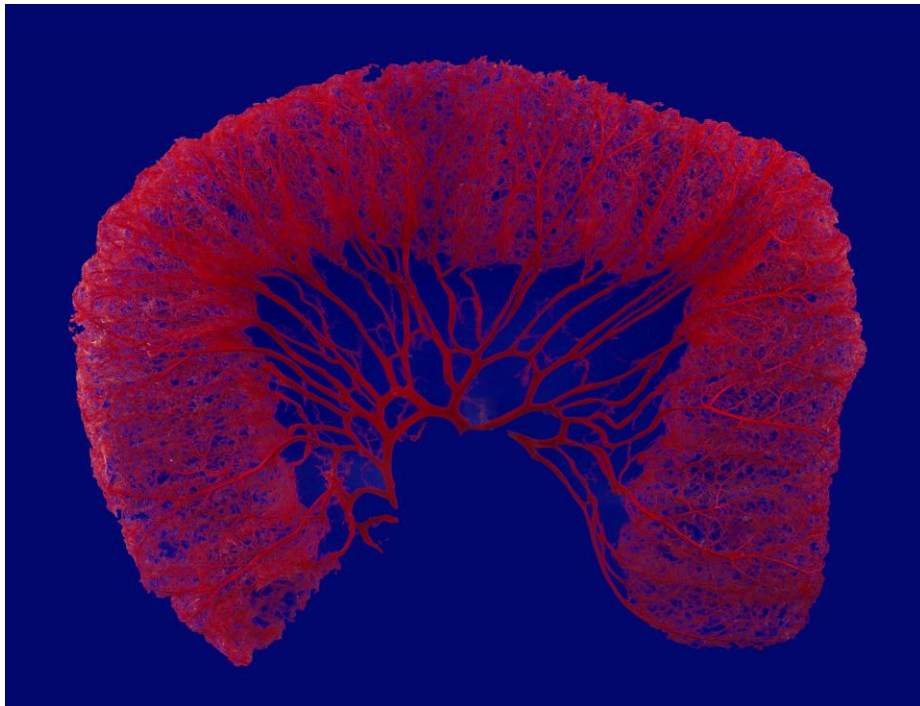
Art - No : C036
Splenic artery



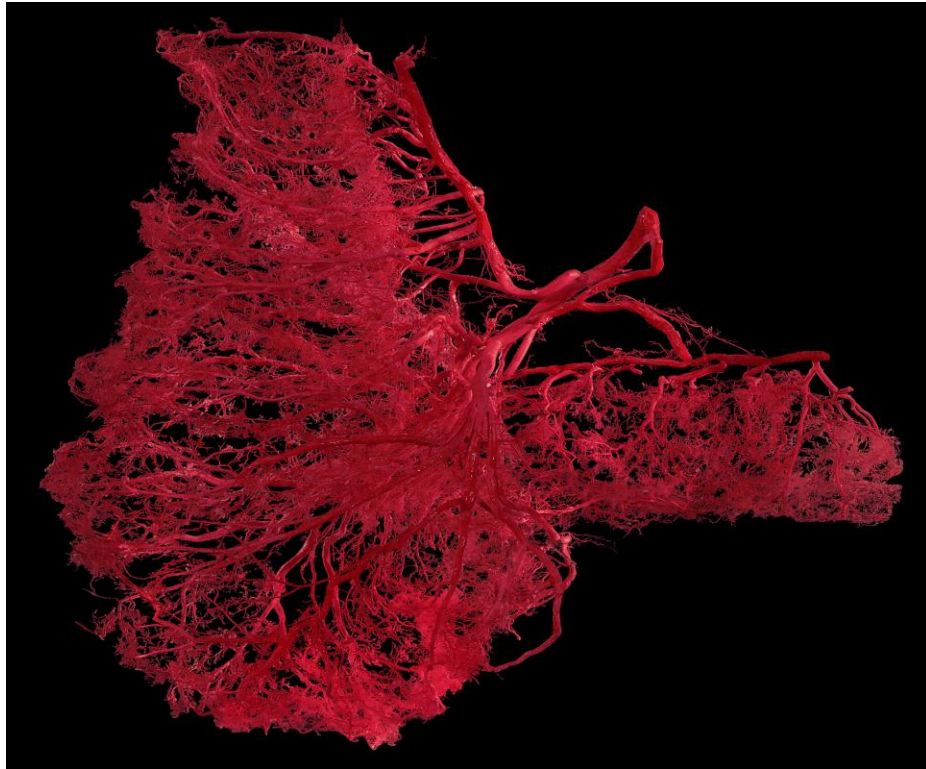
Art - No : C037
Pancreatic duct and splenic artery



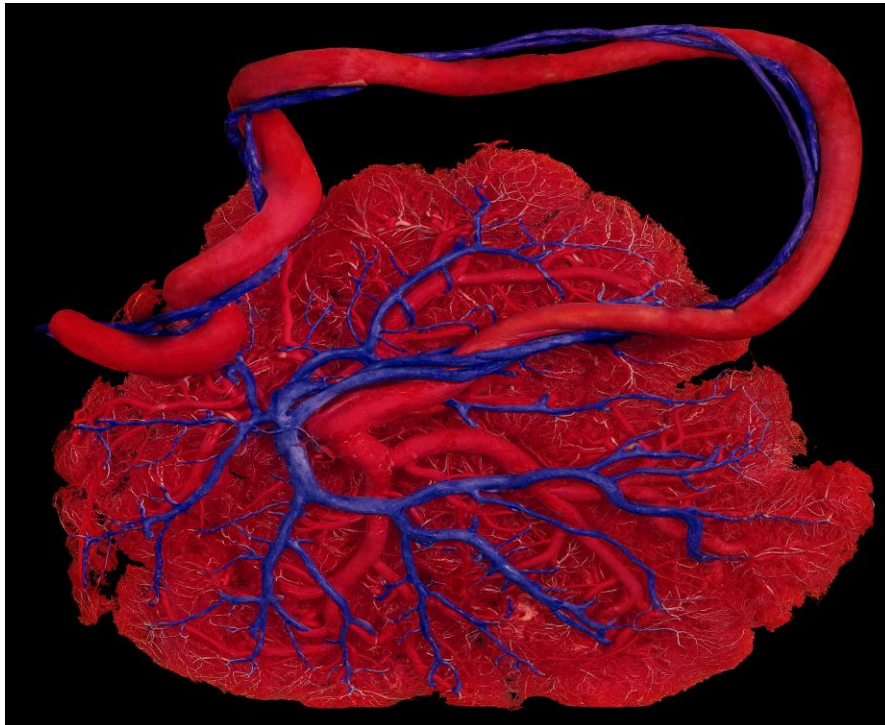
Art - No : C038
Stomach showing the branches of left and right gastric artery



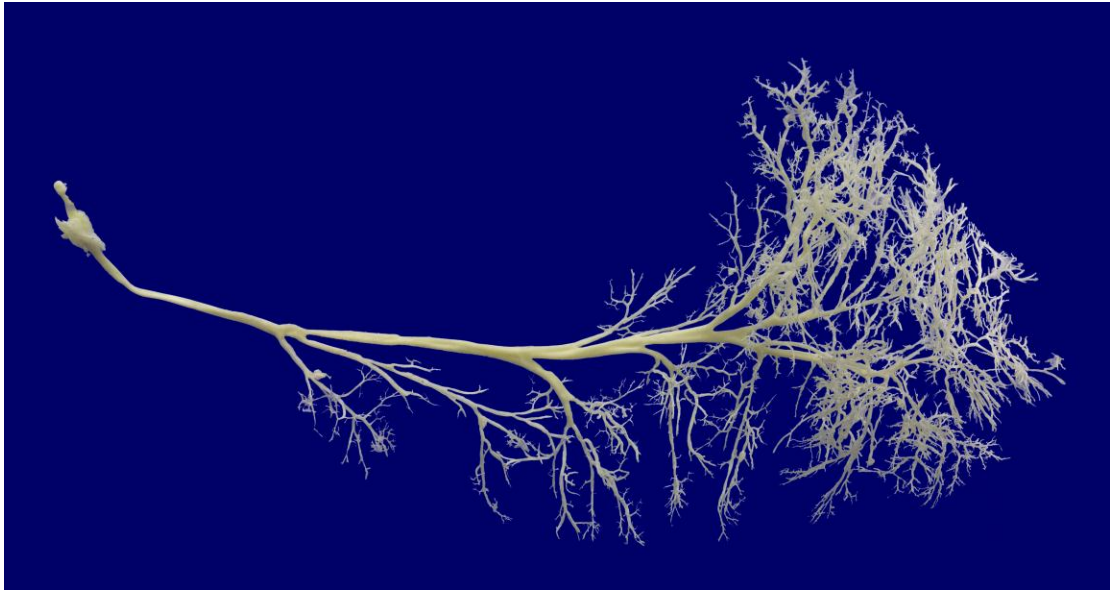
Art - No : C039
Blood vessels of small intestinal



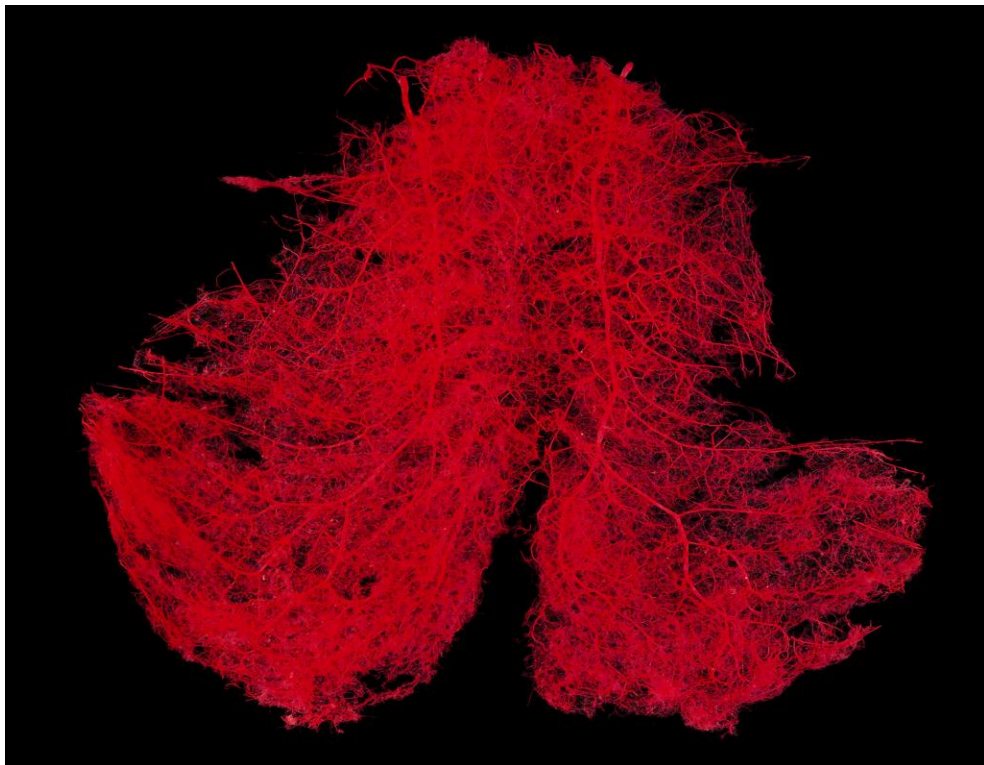
Art - No : C040
Arteries of ileocecum



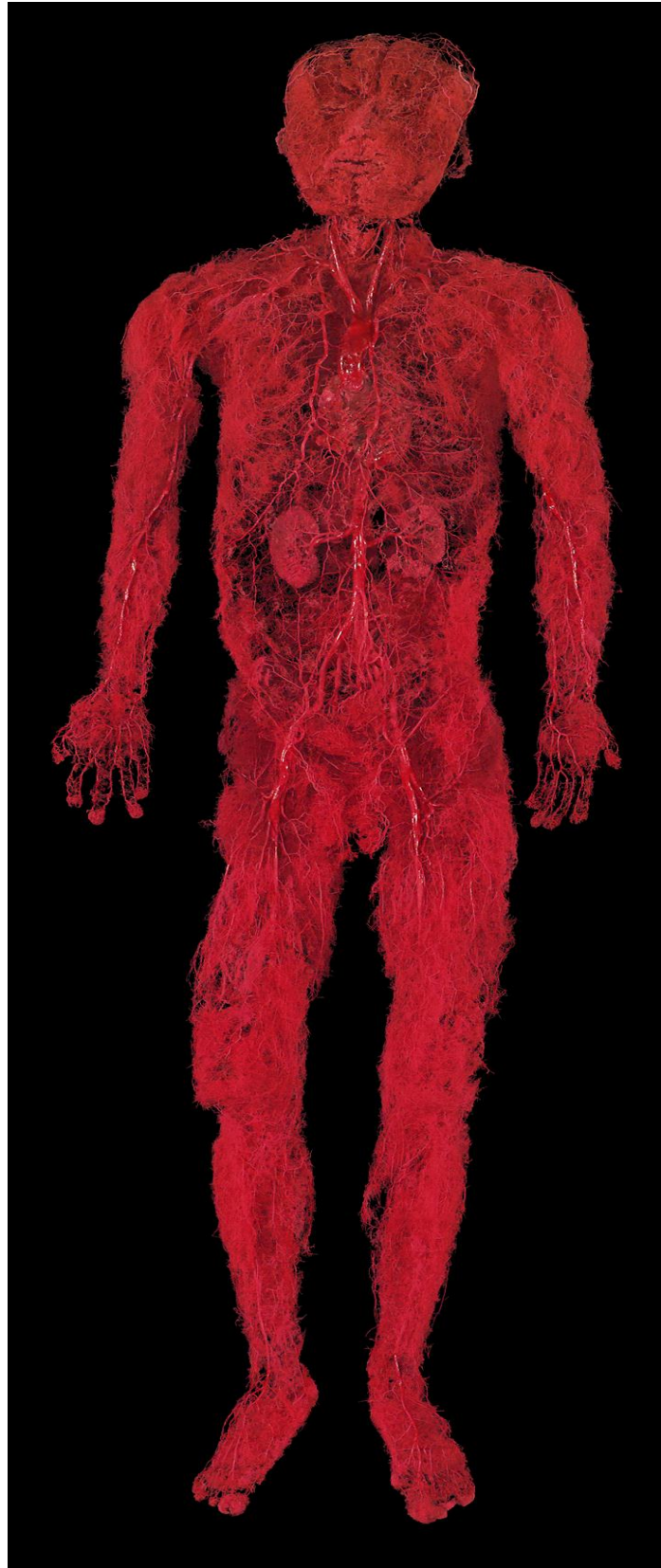
Art - No : C042
Blood vessels of placenta



Art - No : C045
The parotid duct system



Art - No : C046 Thoracic wall
showing the branches of left and right internal thoracic artery



Art - No : C047
Adult arterial system of whole body